



THE FORBIDDEN WORLD OF DON TIKI

**She tried the real world.
She just didn't like it.**

A Prospectus for Participation in a New Feature Film

Dana Hankins

Producer

Redhead Prods LLC

hawaiiredhead@mac.com

808.306.3042

Lloyd Kandell

Producer

Taboo, Inc

lkandell@hawaii.rr.com

808.735.4333

Daniel Ziegler

Writer/Director

dpzee@yahoo.com

808.375.2242

THE FORBIDDEN WORLD OF DON TIKI

The Project

The Project: Feature length motion picture for theatrical release, followed by distribution into cable television, broadcast television, DVD and ancillary markets

Project status:

- Screenplay completed
- Director attached
- Casting in progress
- Location scouting in progress
- Distributor submission

Timeline:

January 2011 – March 2011	Principal Photography
April 2011 – October 2011	Post Production
November 1, 2011	Release Date

Screenplay & synopsis by Daniel Ziegler • Lyrics by Kit Ebersbach
Registered WGA #: 1389137

THE FORBIDDEN WORLD OF DON TIKI

Synopsis

Fed up with the pace of the modern world, Norma is looking for an escape, a place where yesterday's technology is good enough, where enjoying life isn't extra-curricular but the main event. She is looking for the world of Don Tiki.

For the uninitiated though, Don Tiki's universe is dangerous, cultish, subversive. Deputized by her frantic parents, Norma's fiancé Myles will go to any length to keep his betrothed from reaching her goal, the inner sanctum of the Don himself.

The separated couple must find their own paths to the mystical Tiki Island. And though they see the same sights, meet the same people, their experiences are altogether different. Norma's trip into Don Tiki's domain is enchanting; Myles sees only threats and danger.

But Myles can't help but learn from the colorful guides and expansive adventures along his trek. As the couple reach the end of their journey, they come together at last and are given a rare glimpse at the real world from Don Tiki's perspective. It's enough to make even Myles think twice about going home.

SAMPLE SONGS FROM THE FORBIDDEN WORLD OF DON TIKI

1 While searching for his fiancé Norma before she can reach the mysterious island of Don Tiki, Myles gets his first clue where to find her...

CHINATOWN BAR

*“Buy drinks — drinks for her,
it seems so proper and so de rigueur
Stockings sizzle on her thighs,
that look in her eyes,
I feel like a prize
Chinatown Bar Cha Cha Cha*

*She calls me handsome
she calls me clever
while I make plans
to stay forever
Chinatown Bar Cha Cha Cha”*

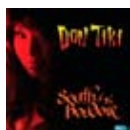
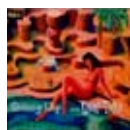
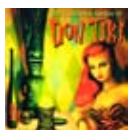


3 They both wind up on the exotic shores of Tiki Island, with Norma as a wide-eyed tourist and Myles in furious and irritable pursuit.

THE NATIVES ARE RESTLESS

*“Let me tell you ‘bout my
neighborhood
‘cause when you visit me tonight
ooh, you better stay out of the
shadows,
stay in the bright, bright light
Don’t take fright,
the natives are restless tonight*

*They’re not particularly interested
in me or you
They’re just looking for some meat
to put into their stew
Don’t take fright,
the natives are restless tonight”*



All songs from the records of Don Tiki

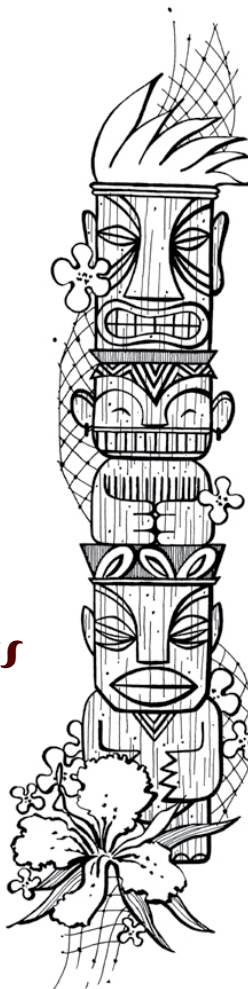
2 But his way seems to be blocked at every turn... by the very same people who are helping Norma find the elusive Don Tiki. The denizens of Chinatown conspire to sing a dark warning to him...

PAGAN LUST

*“Whatever you do
to help you make it through
Whatever you do
do what you must
But whatever you do, don’t drink
whatever you do, don’t drink
whatever you do, don’t drink
that Pagan Lust*

*Whatever you drink
to put you in the pink
It’s not what you think
in God you’ll trust
So whatever you do, don’t drink
whatever you do, don’t drink
whatever you do, don’t drink
that Pagan Lust*

*Oh, listen to me people
you’ll be swimmin’ in sin
You can smell the guava, but there’s
red-hot lava in a cobra’s skin
You’ll feel the fangs of a dragon
thru a palace guard’s boot
You’ll do the full-quart squirm,
you tequila worm
through the passion-fruit”*



4 Myles finally catches up with her... in the lair of the Don himself! Losing control under the spell of the mysterious singer, Myles finally comes to a new understanding of tiki.

THAT HYPNOTIZING MAN

*“Oh that hypnotizing man
that hypnotizing man
He’ll put the hoodoo on you too,
that hypnotizing man*

*He will fit you in his plans
and then hit you with demands
He knows you well, you’re in his spell
that hypnotizing man”*

THE FORBIDDEN WORLD OF DON TIKI

Filmmakers

Writer-Director/Dan Ziegler is an expatriate New Yorker living in relative bliss in Honolulu where he writes and directs broadcast advertising, films, documentaries, and corporate communication. Daniel recently completed "Sydney Skytour: The Great Australian Expedition", a multi-\$million, multi-sensory attraction in Sydney, Australia. He also recently wrote and directed a national industrial for Schering Plough starring Martin Short. He is developing a travel show called "Don't Go There," as well as "Red Flag", a broadcast television episodic and has written screenplays for independent feature projects "The Last Watch;" and "Storyteller." As Creative Director of PBS affiliate station KHET (Hawaii Public Television), Daniel directed such shows as "Black-out Baby," an Emmy award winning documentary on Pearl Harbor; "The Breaks," a weekly television magazine; and "Simple Courage," an internationally acclaimed documentary on the history of leprosy in Hawaii. He is the recipient of numerous film and broadcasting awards including two Emmys, Cine Eagles, Peles, the IRIS Award, and awards from the Chicago, Houston, New York, and Hawaii International Film Festivals.

Producer/Dana Satler Hankins is the president of Redhead Productions, an entertainment company involved in theatrical, television, documentary, and commercial production. Her most recent project, KNOTS ('10), is an independent film set in Hawaii about wedding planners who can't keep their own kapakahi love lives in order, starring Illeana Douglas and is in post-production. Short film, CHIEF ('08) premiered at the Sundance Film Festival and enjoyed a run at prestigious festivals across the country. Her theatrical credits include Hollywood features THE TEMPEST (directed by Julie Taymor for release in '09), STAKEOUT, BIRD ON A WIRE, and SHORT CIRCUIT, as well as the critically acclaimed independent release, PICTURE BRIDE, winner of the Audience Award at the Sundance Film Festival in 1996.

THE FORBIDDEN WORLD OF DON TIKI

Filmmakers

Co-Producer/Lloyd Kandell is Fluid Floyd, Don Tiki's co-creator, producer, and manager. Kandell met his partner in Tiki, Kit Ebersbach aka Perry Coma, while looking for a piano teacher in 1978 on the island of Kauai. Kandell runs Taboo Records (publisher of Don Tiki) out of his 1927 vintage Hawaiian home. He is also the president of Kandell Advertising, Inc., an award winning advertising and public relations firm.

Composer & Musical Director/Kit Ebersbach was nurtured 10 miles away from the smog-enveloped spires of Manhattan. In his post-BA days, acting on the sort of cheap enlightenment he was convinced he had attained under the cerulean skies of Hawaii, he made the Mistake of his Life, choosing the benighted career of Professional Musician. His last hope on Earth is that, by changing his name to Perry Coma and foisting the neo-exotica music of Don Tiki onto an unsuspecting and indifferent public, he can at last pay his back taxes -- or maybe avoid paying them entirely, should the nom-de-tiki work out that way.....

DON TIKI/1st release in 1997, The Forbidden Sounds of Don Tiki, included guest artists Martin Denny, Teresa Bright and Jimmy Borges. New release, South of the Boudoir, winner of Hawaii Music Awards 2009 Best Adult Contemporary album. First live show at the historic Kahiki in Columbus, Ohio in 2000 and have played sold out concerts in Hawaii from the Hawaiian Hut to the Hawaii Theatre. Played at large conventions for Microsoft, Google, Cisco, etc. and headlined a 2008 summer music festival in Berlin. Licensed songs for world-wide TV ad campaigns for Samsung and VW. Featured on Anthony Bourdain: No Reservations - Hawaii episode on the Travel Channel.

THE FORBIDDEN WORLD OF DON TIKI

Analysis/Summary

1. The proposed project lies within a proven commercial genre; a family film that will appeal to all segments of the audience – it's a journey set in the exotic, whimsical, and sensual tiki-land, as well as an adventure for the kids;
2. It has as a built-in audience, due to the interest in and success of the pre-released musical tracks;
3. The marketing and promotion of the feature film will benefit from the visually attractive - colorful, fun and stylish - elements of tiki culture, as well as the pre-released musical tracks;
4. The Forbidden World of Don Tiki has the potential to cast high-profile talent due to the unique nature of the material;
5. The production team, including director and producers, are experienced professionals whose previous film and music projects are highly regarded;
6. The relatively moderate production budget speaks to the support of the local community (in-kind donations) as well as assurance that the film will make a return to investors;
7. The expected ROI after priority return of principal is 191%, projected to be within three years from theatrical broadcast.

This memorandum is a business overview and for discussion purposes only. It does not constitute an offer, agreement, or binding offer for financing or sale of securities. It is for confidential use and may not be reproduced without permission.

THE FORBIDDEN WORLD OF DON TIKI

Projections*

Budget: \$3m

Domestic Box Office:	\$12m	
Reduced by Exhibitor/Distributor Expenses inc P&A	\$9m	\$3m
Pay TV:	\$2m	
Reduced by Distributor/Other Expenses	\$1m	\$1m
Home Video/DVD:	\$20m	
Reduced by Exhibitor/Distributor Expenses inc P&A	\$14m	\$6m
Basic Cable:	\$2m	
Reduced by Distributor Expenses	\$1m	\$1m
New Media applications (click-through)	\$1m	
Reduced by Distributor Expenses	\$.5m	\$.5m
Merchandising Tie-In with New Music sales	\$1m	
Reduced by Distributor Expenses	\$.6m	\$.4m
Foreign, world-wide, all-in, less expenses		\$8m
Total:		\$19.9m
Less Budget:		\$3m
Return:		\$16.9m

*Data: imdbpro.com, Film Specific – independent film distribution; thenumbers.com; boxofficemojo.com

The projections contained herein are estimates only. The company does not intend to update or otherwise revise the projections to reflect circumstances existing after the date hereof or to reflect the occurrence of future events.

THE FORBIDDEN WORLD OF DON TIKI

Terms Worksheet (1)

Cash Investment \$3m

To apply as tax credits:

Hawaii Income Tax Credit, Act 221, Section 235

Provides a 100% tax credit against Hawaii State taxes, for equity investments in Qualified High Tech Companies (QHTB). Investors claim this credit front-loaded over five years; 35% (up to \$700,000) in Year/1, 25% (up to \$500,000) in Year/2, 20% (up to \$400,000) in Year/3, 10% (up to \$200,000) in Year/4, 10% (up to \$200,000) in Year/5

Federal Deduction as per 2004 Jobs Act, section 181

Section 181 permits a 100% write-off for the cost of certain audiovisual works. An individual or company who makes an investment into Section 181 qualified productions can take a 100% deduction of their investment against their passive (individual) or ordinary (as C Corporation) income in the year their investment was made.

Federal Deduction as per 2004 Jobs Act, section 199

Section 199 provides a 9% deduction of so-called qualifying "production activities income," which refers to the net income from the license, sale, exchange or disposition of any "qualified film" produced by the taxpayer.

Hawaii Act 221, Section 235, Royalties exclusion

provides that royalties derived from Performing Arts products of QHTB are excluded from taxable gross income and not subject to state income tax.

THE FORBIDDEN WORLD OF DON TIKI

Terms Worksheet (2)

Cash Investment \$3m

To apply as return on investment:

Net Producer Income (NPI) (ROI)

First \$3m, return to Investors \$3m

Assuming Jan 2012 release date, allow 9 months for return/Oct 2012

Next \$6m, NPI return is split 50-50% \$3m (100%)

Producer/Investor

Assuming Jan 2012 release date, allow +9 months for return/July 2013

Next \$10.9m, NPI return is split 75-25% \$2.725m (191%)

Producer/Investor

Assuming Jan 2012 release date, allow +9 month for return/Apr 2014

Thereafter, NPI return is split 90%-10% +

Producer/Investor

Total return after investment \$5.725m

The projections contained herein are estimates only. The company does not intend to update or otherwise revise the projections to reflect circumstances existing after the date hereof or to reflect the occurrence of future events.

THE FORBIDDEN WORLD OF DON TIKI

Comparables

The Rocky Horror Picture Show, 1975

A newly engaged couple have a breakdown in an isolated area and must pay a call to the bizarre residence of Dr. Frank-N-Furter. Cast: unknowns. Budget \$1.2m. Worldwide gross: \$140m

The Commitments, 1991

The travails of Jimmy Rabbitt to form the "World's Hardest Working Band," The Commitments, and bring soul music to the people of Dublin, Ireland. Cast: unknowns. Budget \$5m. Worldwide gross: \$14.9m

Strictly Ballroom, 1992

Scott Hastings is a champion ballroom dancer, who believes in dancing "his own steps". Fran is a beginning dancer and a bit of an ugly duckling. Together, these two misfits try to win the Pan Pacific Championships. Cast: unknowns. Budget: \$3m (AUD). Worldwide gross: \$11.7m

Adventures of Priscilla, Queen of the Desert, 1994

Two drag queens and a transsexual get a cabaret gig in the middle of the desert. Cast: unknowns (then). Budget: \$2m (AUD). Worldwide gross: \$11.2m

The Full Monty, 1997

Six unemployed steel workers form a male striptease act. The women cheer them on to go for "the full monty" - total nudity. Cast: unknowns. Budget \$3.5m. Domestic gross: \$46m. Worldwide gross: \$256m

Once, 2006

A modern-day musical about a busker and an immigrant and their eventful week in Dublin, as they write, rehearse and record songs that tell their love story. Cast: unknowns. Budget: \$150k. Worldwide gross: \$20m